

PARTNERS AND RELEVANT ACTIONS IN A PROJECT

Workshop events of the 3rd call

Managing Authority



CBC 2014-2020
SOUTH-EAST FINLAND - RUSSIA

*Funded by the European Union,
the Russian Federation and
the Republic of Finland.*

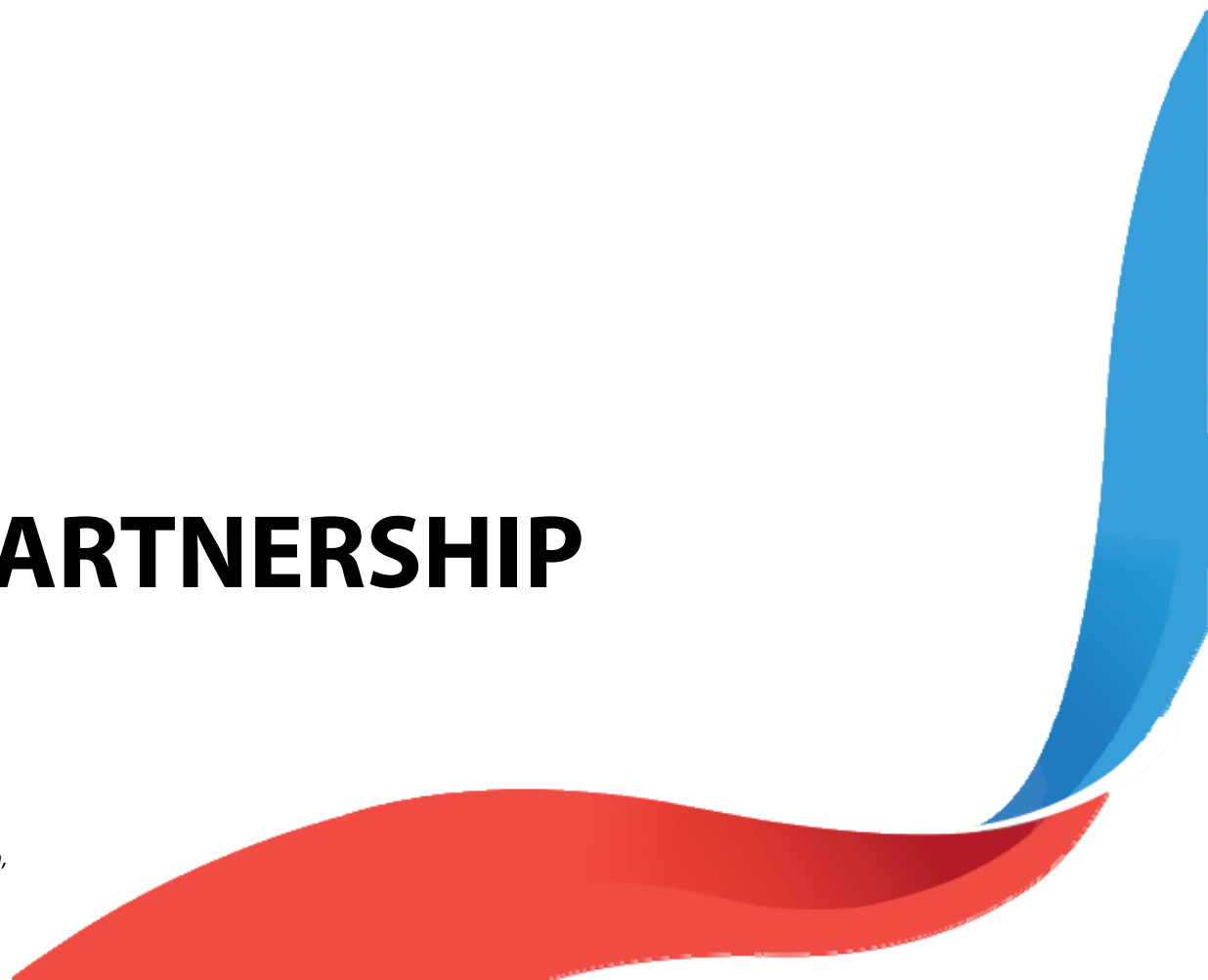


PROJECT PARTNERSHIP



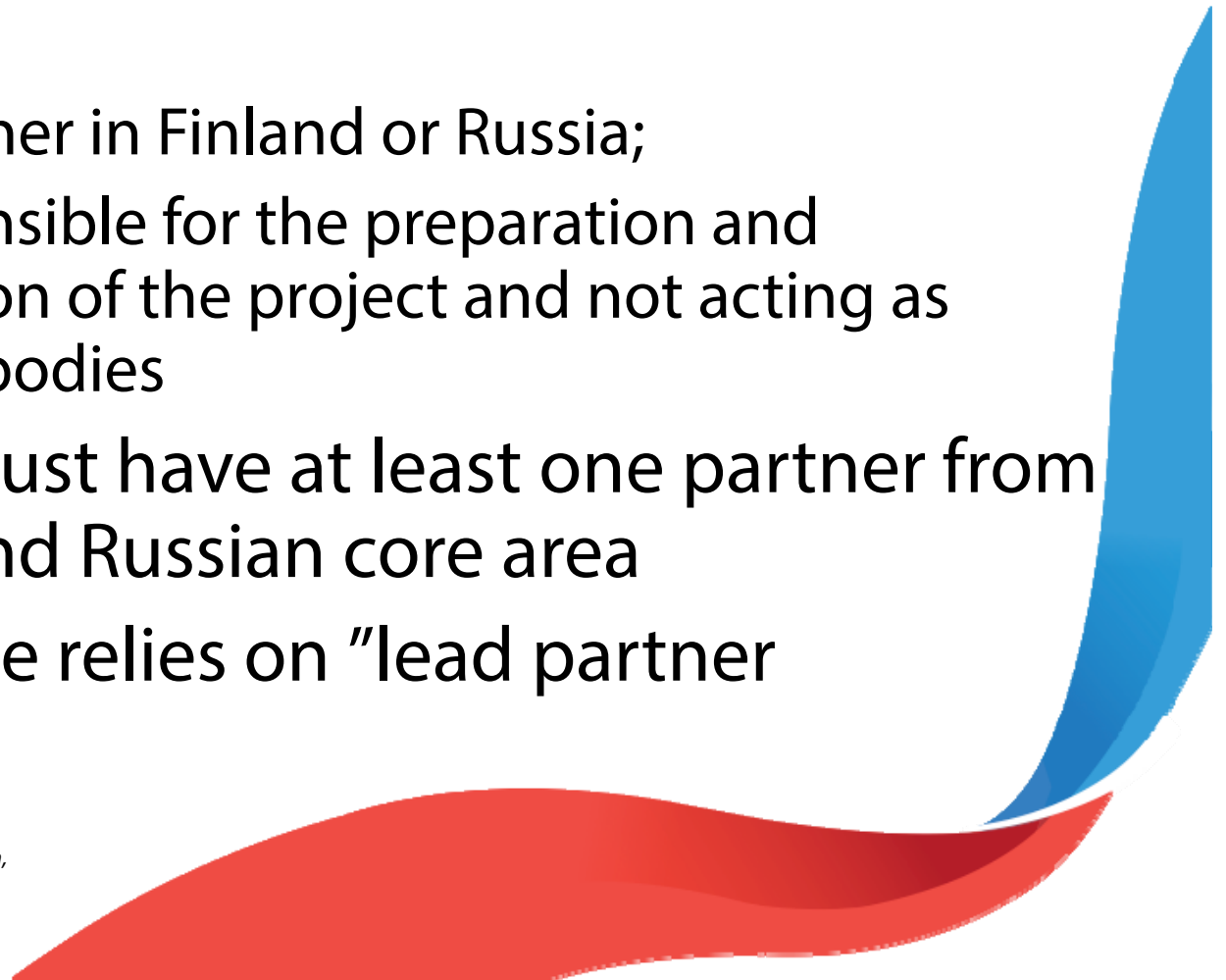
CBC 2014-2020
SOUTH-EAST FINLAND - RUSSIA

*Funded by the European Union,
the Russian Federation and
the Republic of Finland.*



Principles of project partnership

- Project partners have to be
 - legal persons;
 - registered, either in Finland or Russia;
 - directly responsible for the preparation and implementation of the project and not acting as intermediary bodies
- Each project must have at least one partner from both Finnish and Russian core area
- The programme relies on "lead partner principle"



Preconditions for partnership

- Lead partner and partners are expected to be operationally and financially stable
- Experience in international cooperation especially between Finland and Russia is expected at least from the lead partner
- Public-private-people partnerships are encouraged



CBC 2014-2020
SOUTH-EAST FINLAND - RUSSIA

*Funded by the European Union,
the Russian Federation and
the Republic of Finland.*



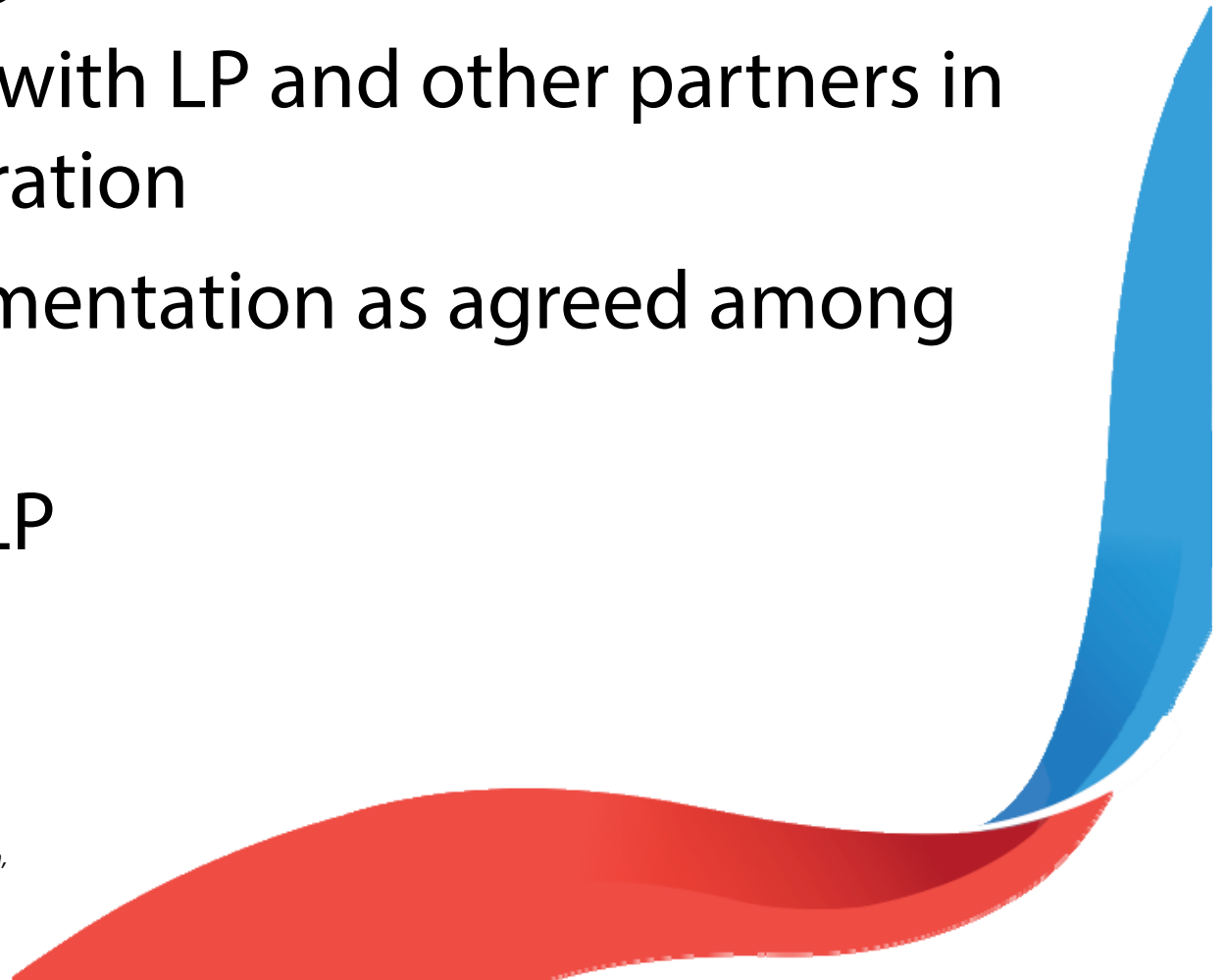
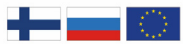
Lead partner's role and responsibilities in a nutshell

- Responsible for preparing & submitting the project application
- If the project is granted
 - Grant contract with MA
 - Grant transfers to partners
 - Launching project implementation
 - Project coordination (including audit procedures)
 - Communication among partnership
 - Delivery of outputs
 - Reporting to MA



Partners' role and responsibilities in a nutshell

- Partnership agreement with LP
- Co-operation with LP and other partners in project preparation
- Project implementation as agreed among partners
- Reporting to LP

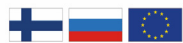


Private sector entities as partners

- NGOs and SMEs are eligible for funding
- Note, that
 - All project results are public
 - It is not allowed to receive profit from project implementation and activities
 - EU rules on state aid are followed with enterprises
 - Investments may not exceed 50 % of total costs in budget. Purchase of land or buildings may not exceed 10 % of total costs in budget
 - Maximum of 50 % of a project's total budget can be directed to Russian SMEs



RELEVANT ACTIONS



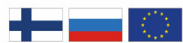
CBC 2014-2020
SOUTH-EAST FINLAND - RUSSIA

*Funded by the European Union,
the Russian Federation and
the Republic of Finland.*



Cross-cutting elements of a good project

- Relevant, cross border added value
- In connection to regional strategies
- Relevant partnership
- Sustainability of actions
- Knowledge-based or innovative approach
- Implements the chosen programme priority from a unique perspective



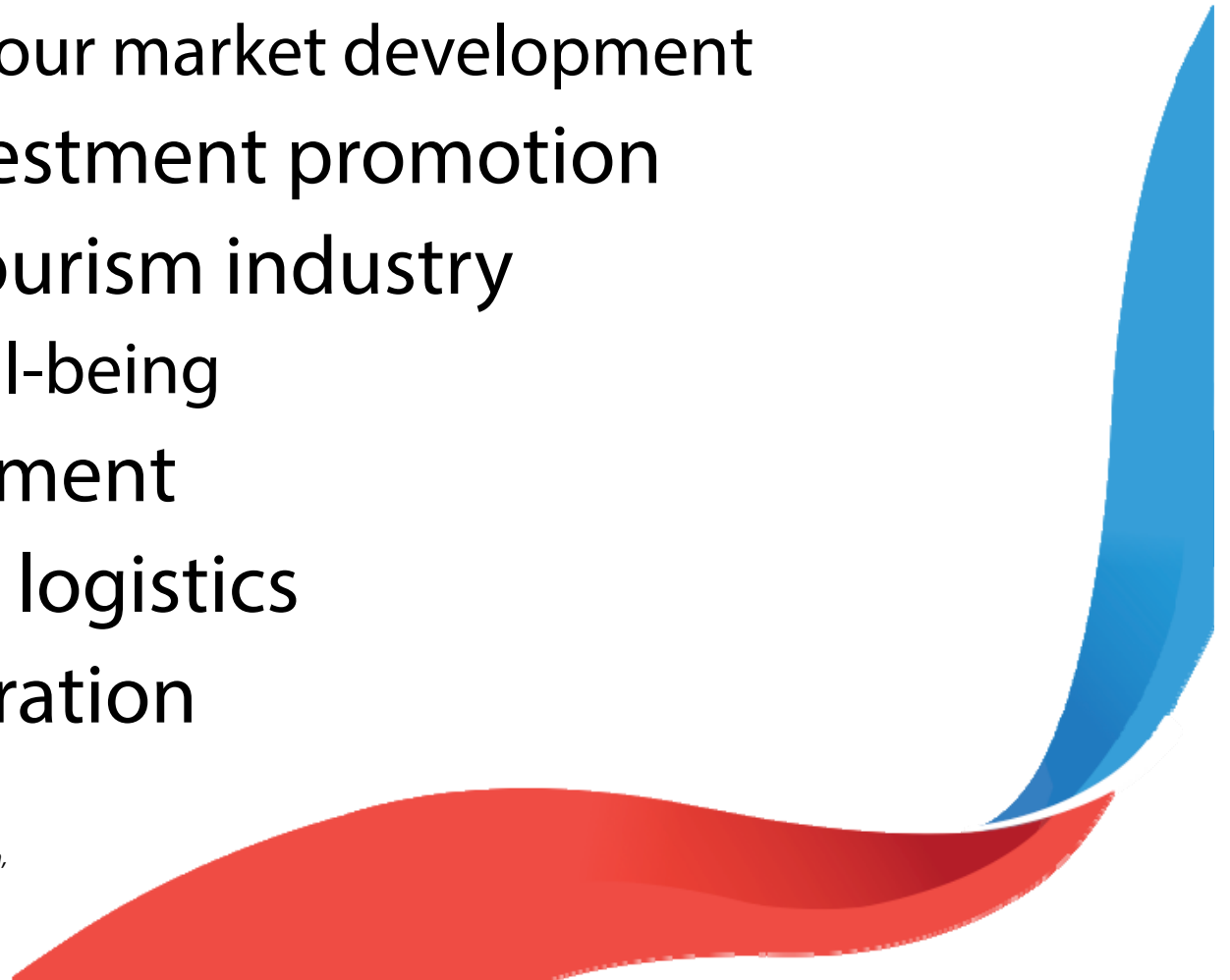
CBC 2014-2020
SOUTH-EAST FINLAND - RUSSIA

*Funded by the European Union,
the Russian Federation and
the Republic of Finland.*



PRIORITY 1: Lively, active and competitive economy

- SME and business development
 - including labour market development
- Trade and investment promotion
- Culture and tourism industry
 - including well-being
- Rural development
- Transport and logistics
- Energy cooperation



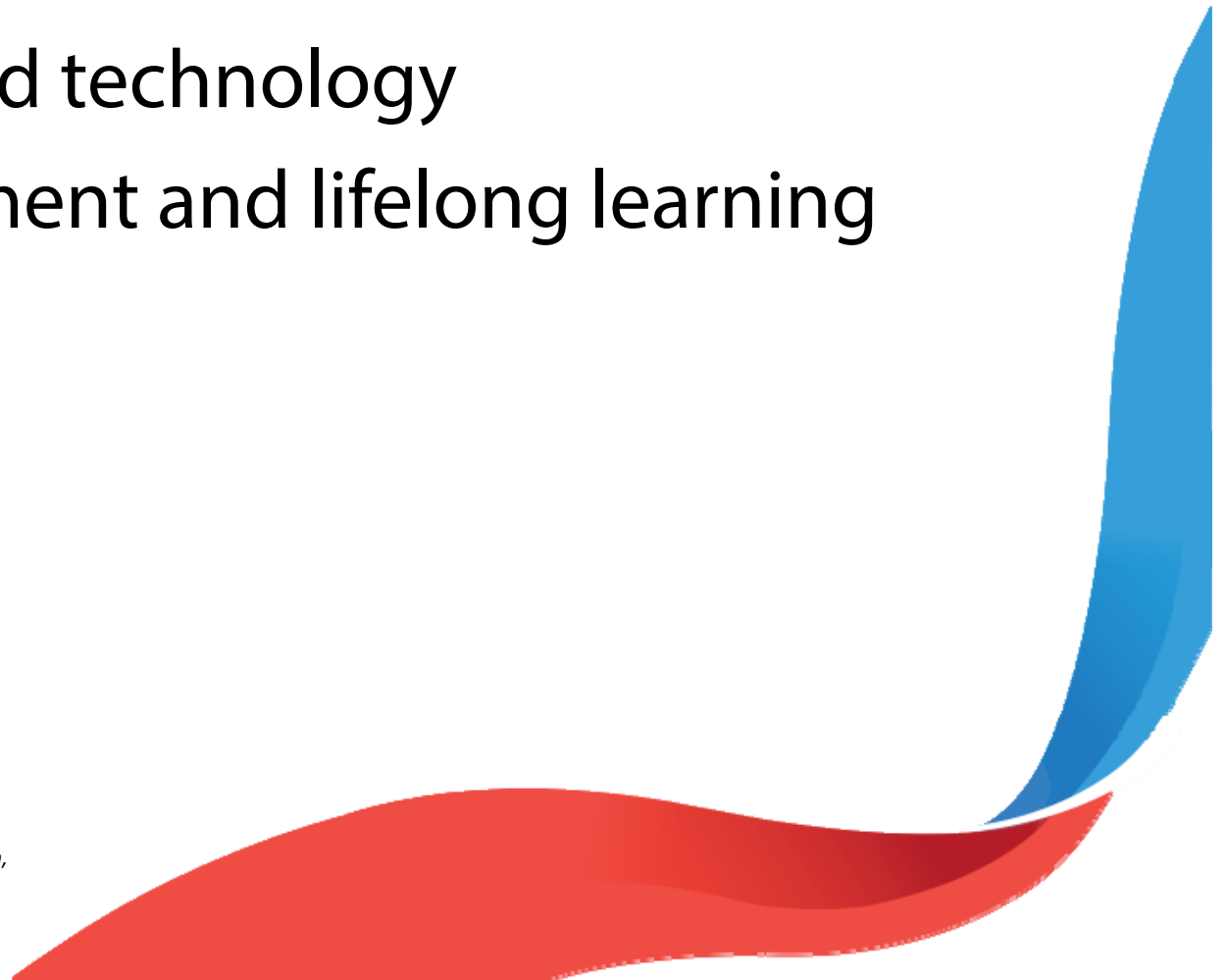
PRIORITY 2: Innovative, skilled and well-educated area

- Research and education
- Innovation and technology
- Skill development and lifelong learning



CBC 2014-2020
SOUTH-EAST FINLAND - RUSSIA

*Funded by the European Union,
the Russian Federation and
the Republic of Finland.*



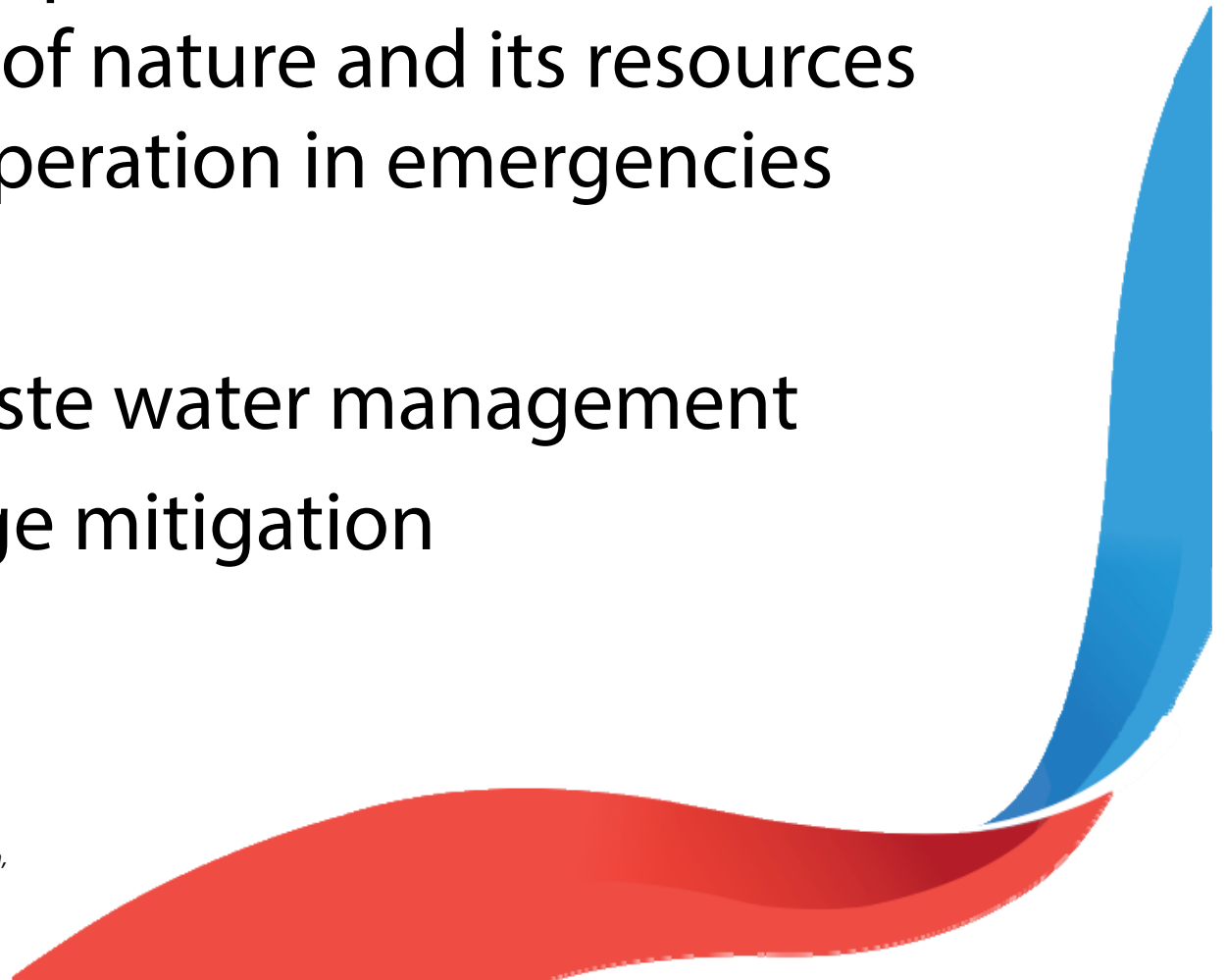
PRIORITY 3: Attractive, clean environment and region

- Environmental protection and sustainable management of nature and its resources including cooperation in emergencies
- Biodiversity
- Waste and waste water management
- Climate change mitigation



CBC 2014-2020
SOUTH-EAST FINLAND - RUSSIA

*Funded by the European Union,
the Russian Federation and
the Republic of Finland.*



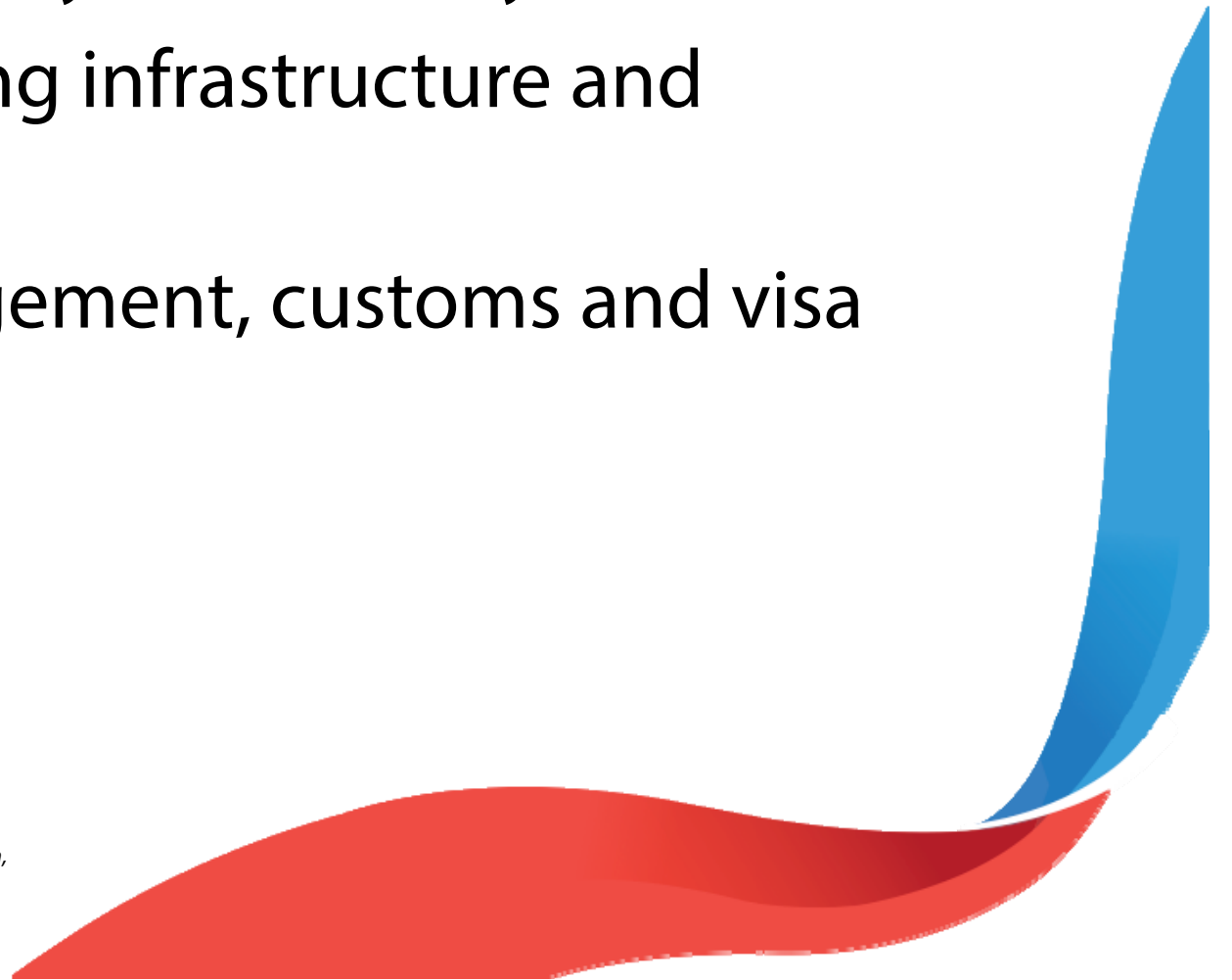
PRIORITY 4: Well-connected region

- Border efficiency and security
- Border-crossing infrastructure and equipment
- Border management, customs and visa procedures
- Traffic safety



CBC 2014-2020
SOUTH-EAST FINLAND - RUSSIA

*Funded by the European Union,
the Russian Federation and
the Republic of Finland.*



FOR MORE INFORMATION



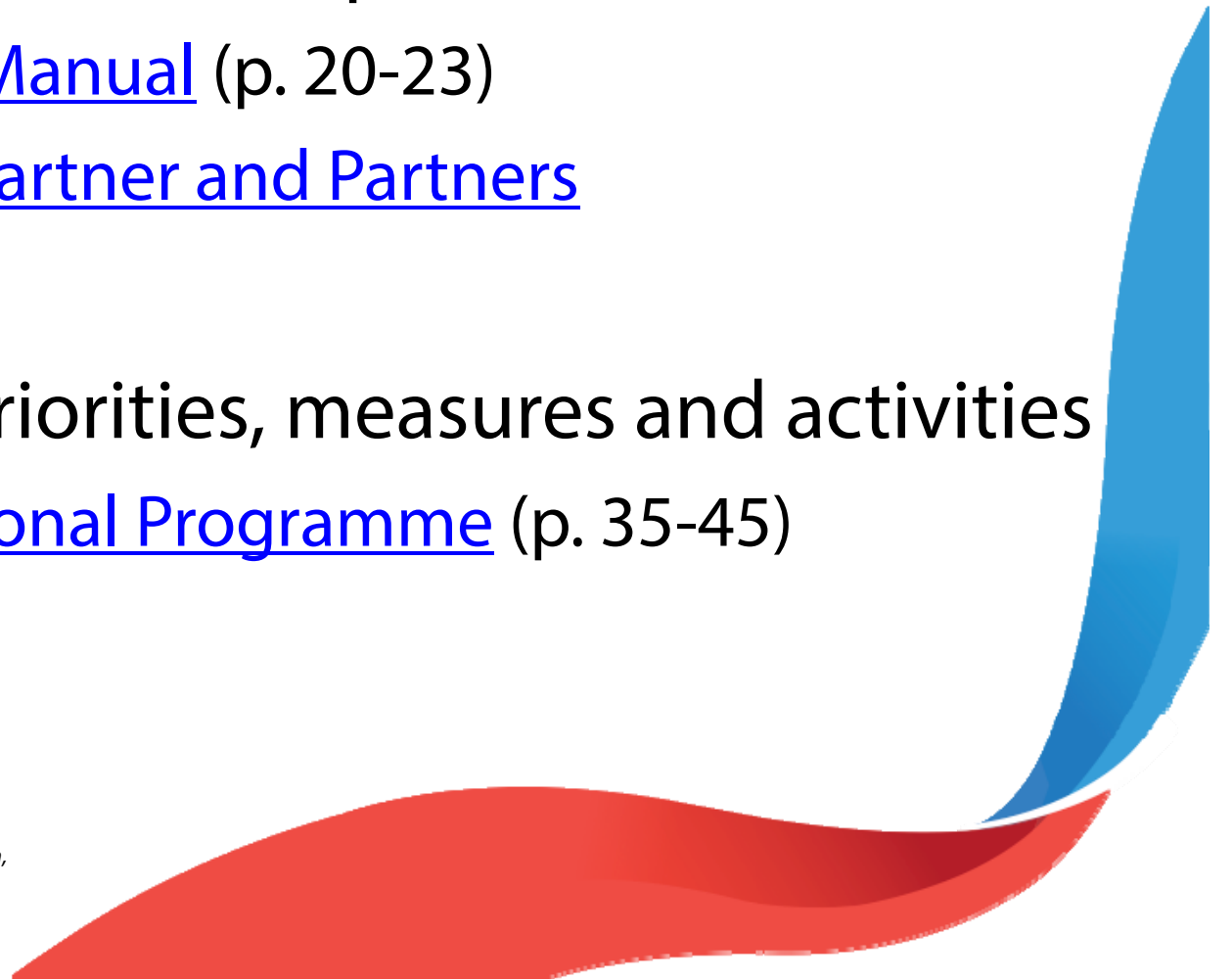
CBC 2014-2020
SOUTH-EAST FINLAND - RUSSIA

*Funded by the European Union,
the Russian Federation and
the Republic of Finland.*



Relevant documents

- Especially for partnership information
 - [Programme Manual](#) (p. 20-23)
 - [Q & A: Lead Partner and Partners](#)
- Programme priorities, measures and activities
 - [Joint Operational Programme](#) (p. 35-45)



Contact us

www.sefrcbc.fi

official@sefrcbc.fi

FACEBOOK [@cbcprogramme](https://www.facebook.com/cbcprogramme)

TWITTER [@sefinruscbc](https://twitter.com/sefinruscbc)



CBC 2014-2020
SOUTH-EAST FINLAND - RUSSIA

*Funded by the European Union, the Russian Federation
and the Republic of Finland.*

